

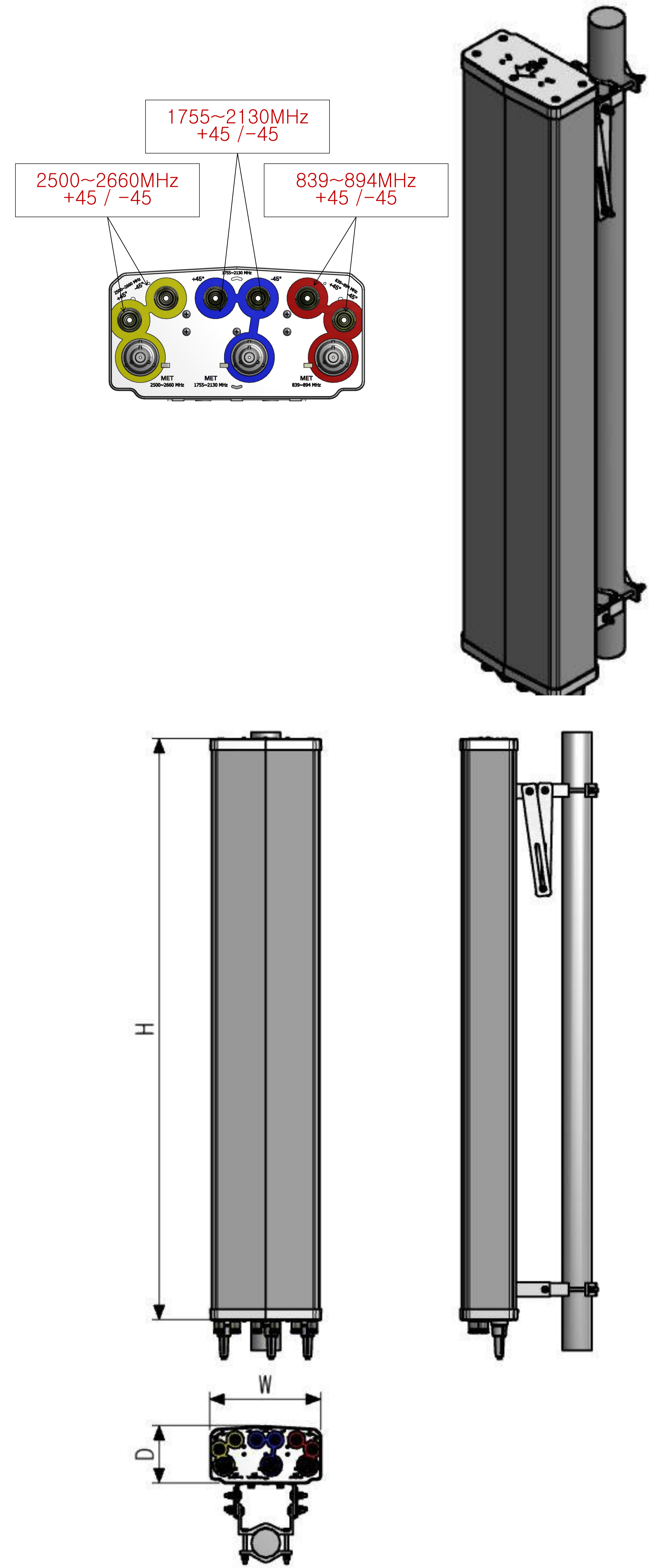
Quad Band Dual Polarization Horizontal 63° 15dBi

Adjust. Electrical Downtilt



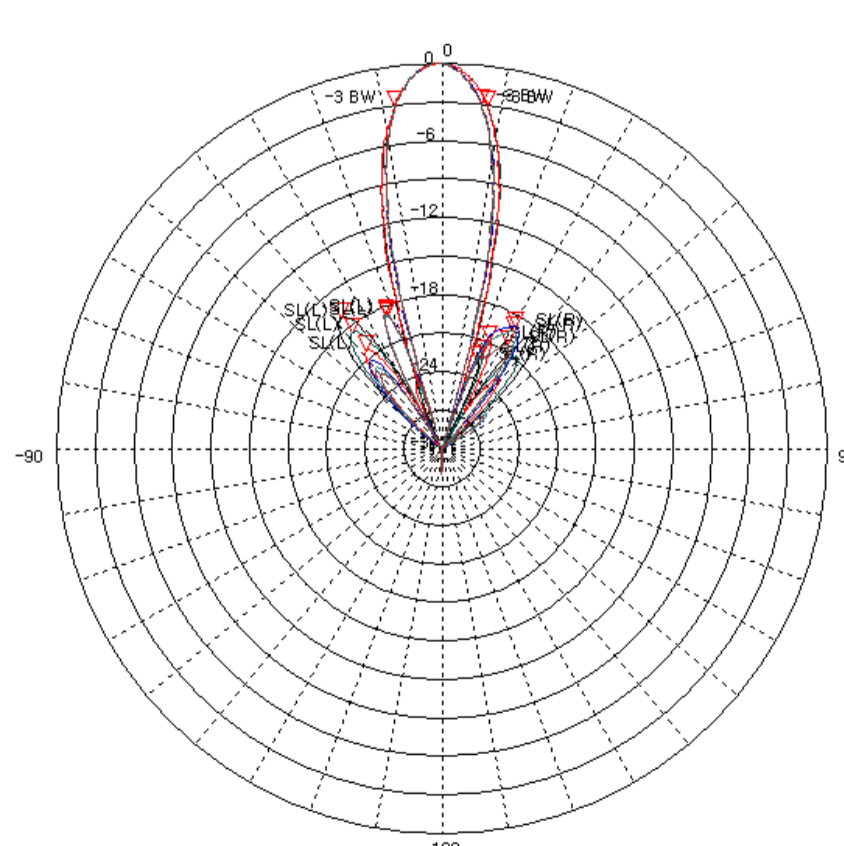
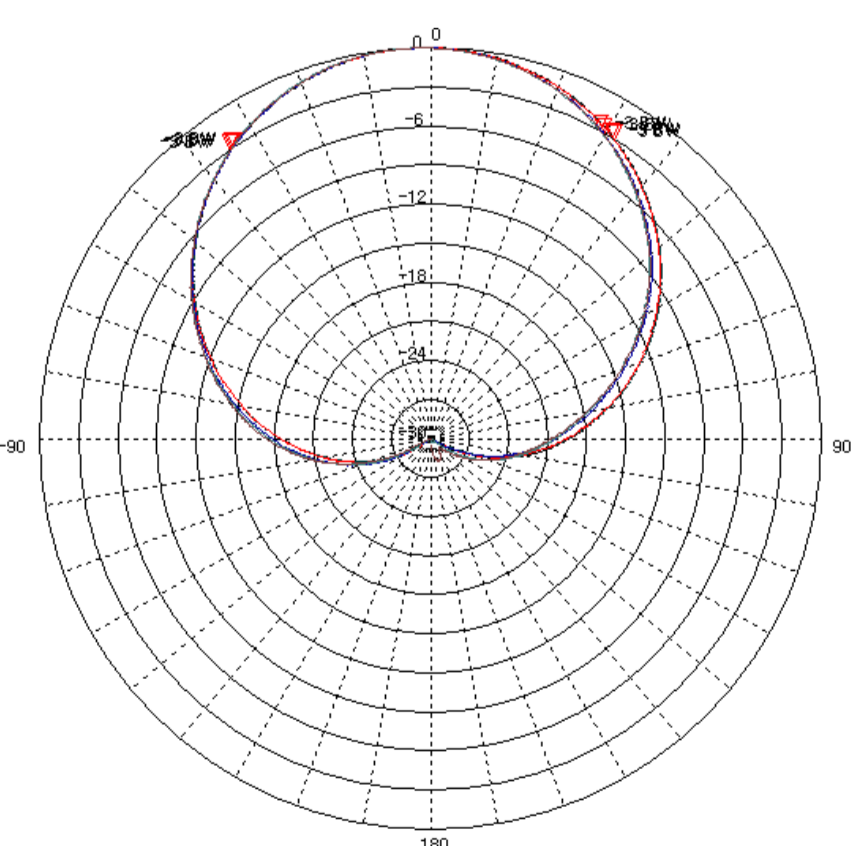
2.6G_EQBDP_63_15dBi

i. Electrical Specification			
Frequency Range	839~894 MHz	1755~2130MHz	2500~2660MHz
Band Width	55 MHz	375MHz	160 MHz
Gain	≥ 14.5 dBi (0°) ≥ 14.0 dBi (7°) ≥ 13.5 dBi (14°)	≥ 14.0 dBi (0°) ≥ 13.5 dBi (7°) ≥ 13.0 dBi (14°)	≥ 15.0 dBi (0°) ≥ 14.5 dBi (5°) ≥ 14.0 dBi (10°)
Polarization	± 45° SLANT	± 45° SLANT	± 45° SLANT
Beam width	Horizontal	65° ± 5°	63° ± 9°
	Vertical	13° ± 3°	12° ± 3°
F-B ratio	Horizontal (@180 ± 30°)	≥ 25 dB ≥ 24 dB(7°) ≥ 23 dB(14°)	≥ 25 dB(0°) ≥ 24 dB(5°) ≥ 23 dB(10°)
	Vertical (@180 ± 60°)	≥ 25 dB ≥ 24 dB(7°) ≥ 23 dB(14°)	≥ 25 dB(0°) ≥ 24 dB(5°) ≥ 23 dB(10°)
VSWR	≤ 1.5 : 1	≤ 1.5 : 1	≤ 1.5 : 1
Impedance	50 Ω	50 Ω	50 Ω
Electrical tilt	0° ~ 14°	0° ~ 14°	0° ~ 10°
Isolation	≥ 30 dB	≥ 27 Db	≥ 27 dB
IMD (3rd)	≤ -150 dBc @ 2x43dBm	≤ -150 dBc @ 2x43dBm	≤ -150 dBc @ 2x43dBm
1st Upper Side lobe level	≥ 15 dB (0°), 14 dB (7°), 13 dB (14°)	≥ 15 dB (0°), 14 dB (7°), 13 dB (14°)	≥ 15 dB (0°), 14 dB (5°), 13 dB (10°)
Cross-Polar Ratio	0°	≥ 15 dB	≥ 15 dB
	±60°	10 dB (0°), 9 dB (7°), 8 dB (14°)	8 dB (0°), 7 dB (7°), 6 dB (14°)
Tracking (±60°)	≤ 3 dB	≤ 3 dB	≤ 3 dB
Squint	± 3.5°	± 5°	± 5°
Maximum input power	≥ 200 W		

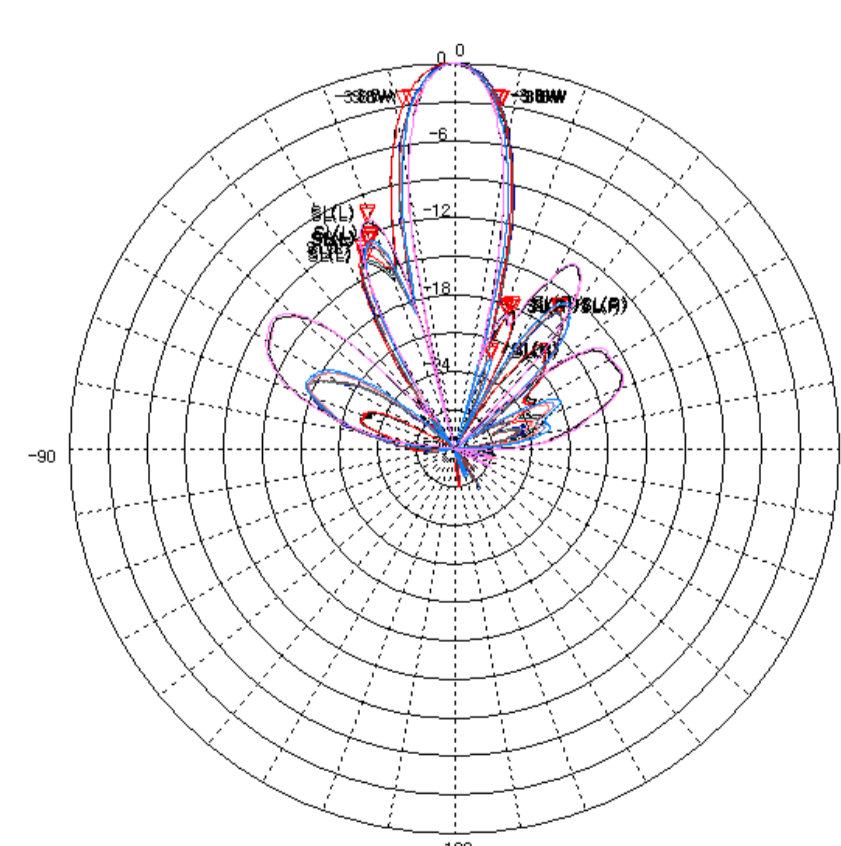
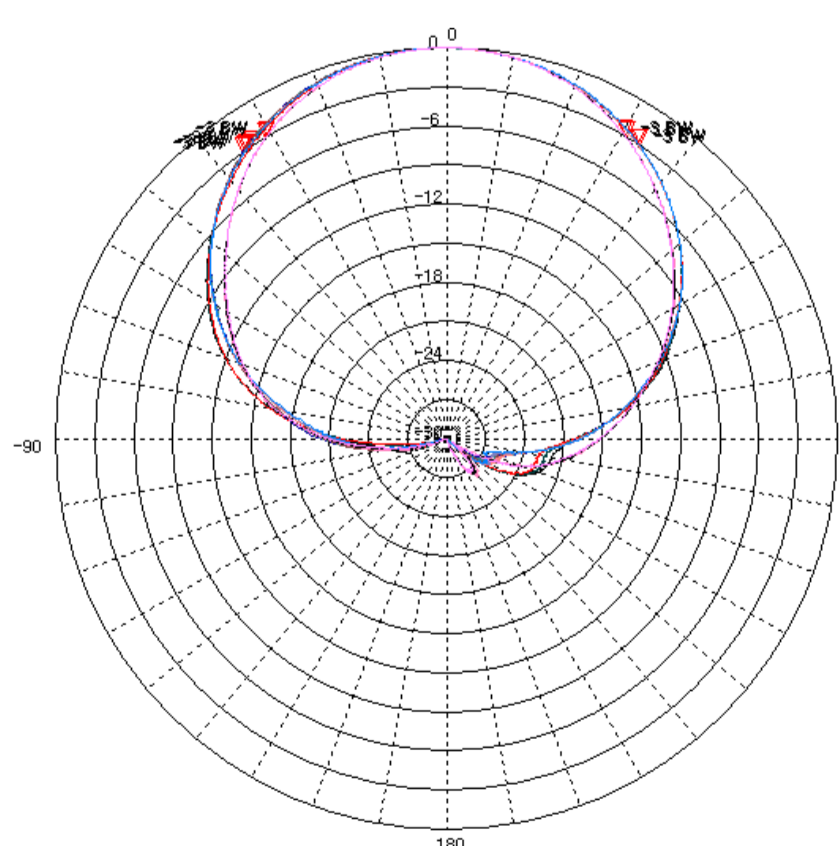


ii. Mechanical Specification	
Radom Dimension (W x D x H)	297 x 150 x 1599 mm
Weight (exclude bracket)	≤ 14.5 kg
Connector Type	7/16" DIN-Female x 6
Withstand Wind Pressure	60 m/sec
Radom Material (color)	A.S.A. +P C (Cool Gray 4C)
Mechanical Down Tilt	0° ~ 20°
Temperature	-40 °C ~ 70 °C
Packing Size (H x W x D)	-
Packing Weight	-

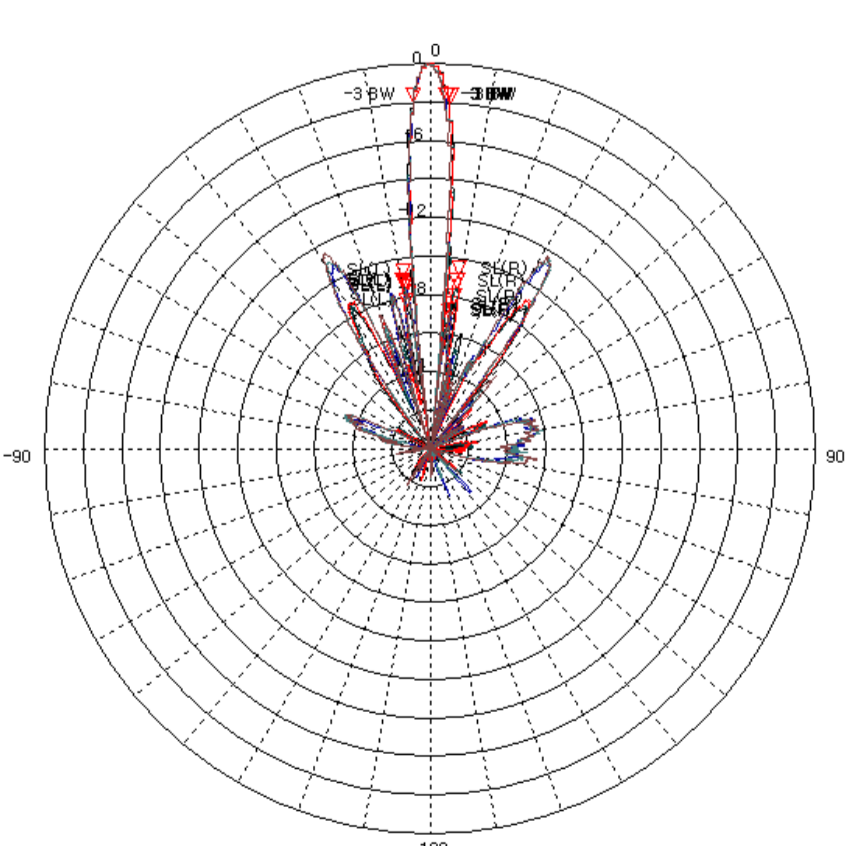
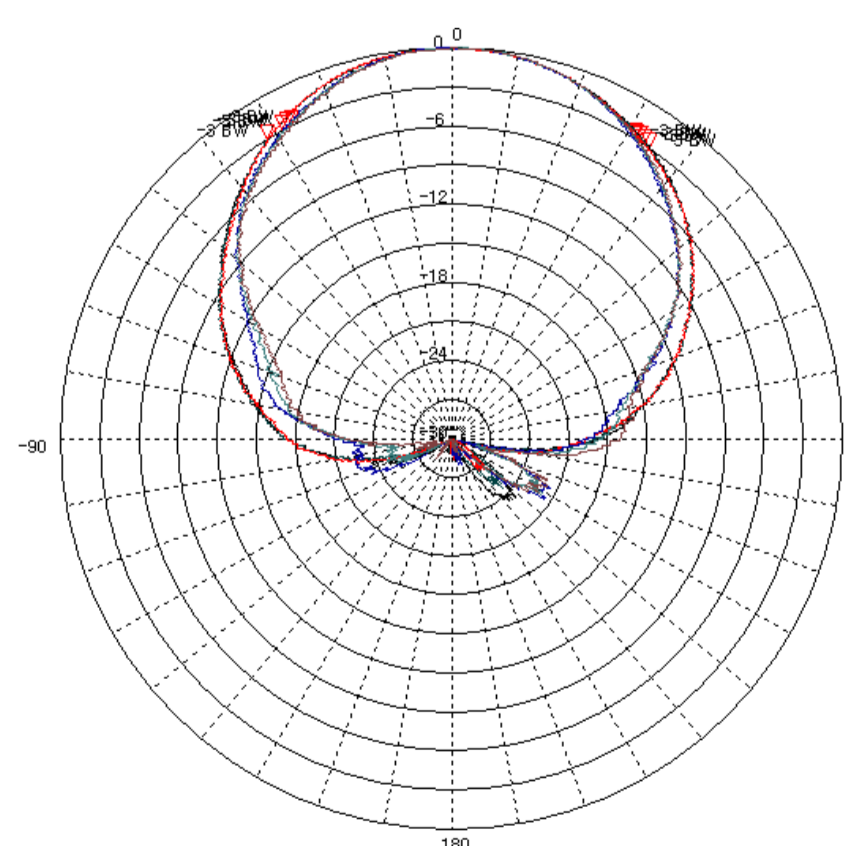
iii. Radiation Pattern



Horizontal Pattern
Vertical Pattern
Low Band



Horizontal Pattern
Vertical Pattern
High Band



Horizontal Pattern
Vertical Pattern
2.6G High Band