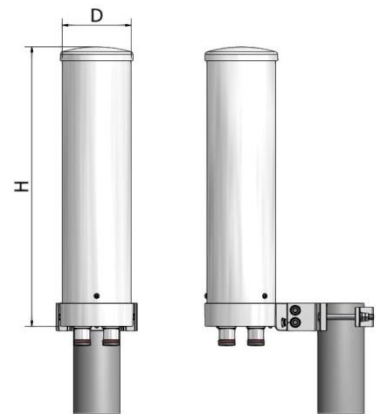
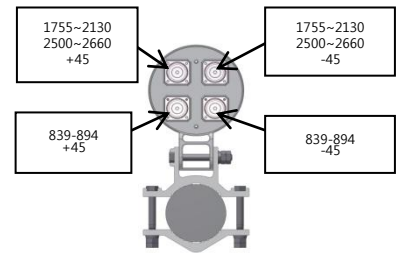


Quad Band Cylinder Type sector Antenna

839 ~ 894, 1755 ~ 2130, 2500~2660 MHz / 5dBi, 7dBi, 7.5dBi

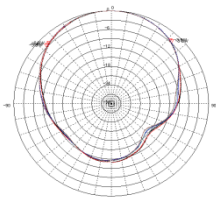
2.6G_QBDP_7.5dBi

i. Electrical Specification				
Frequency Range		839~894 MHz	1755~2130MHz	2500~2660MHz
Band Width		55 MHz	375MHz	160 MHz
Gain		≥ 5 dBi	≥ 7 dBi	≥ 7.5 dBi
Polarization		± 45° SLANT	± 45° SLANT	± 45° SLANT
Beam width	Horizontal	100° ± 30°	70° ± 30°	70° ± 30°
	Vertical	70° ± 30°	65° ± 30°	65° ± 30°
F-B ratio	Horizontal (@180 ± 30°)	≥ 10 dB	≥ 15 dB	≥ 15 dB
	Vertical (@180 ± 60°)	≥ 10 dB	≥ 15 dB	≥ 15 dB
VSWR		≤ 1.8 : 1	≤ 1.8 : 1	≤ 1.8 : 1
Impedance		50 Ω	50 Ω	50 Ω
Electrical tilt		-	-	-
Isolation		≥ 20 dB	≥ 25 dB	≥ 25 dB
IMD (3rd)		≤ -140 dBc @ 2x43dBm	≤ -140 dBc @ 2x43dBm	≤ -140 dBc @ 2x43dBm
1st Upper Side lobe level		-	-	-
Cross-Polar Ratio	0°	≥ 15 dB	≥ 18 dB	≥ 18 dB
	±60°	≥ 6 dB	≥ 8 dB	≥ 8 dB
Tracking (±60 °)		≤ 3 dB	≤ 3 dB	≤ 3 dB
Squint		± 5°	± 3.5°	± 3.5°
Maximum input power		≥ 200 W		

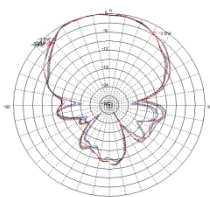


ii. Mechanical Specification	
Radom Dimension (W x D x H)	Ø 120 X 506
Weight (exclude bracket)	1.93 Kg
Connector Type	7/16"DIN-Female x 4
Withstand Wind Pressure	60 m/sec
Radom Material (color)	A.S.A (Cool Gray 4C)
Mechanical Down Tilt	0 ° ~ 20 °
Temperature	-40 °C ~ 70 °C
Packing Size (H x W x D)	-
Packing Weight	-

iii. Radiation Pattern

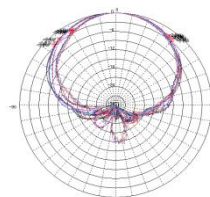


Horizontal Pattern

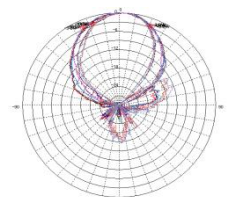


Vertical Pattern

Low Band



Horizontal Pattern



Vertical Pattern

High Band