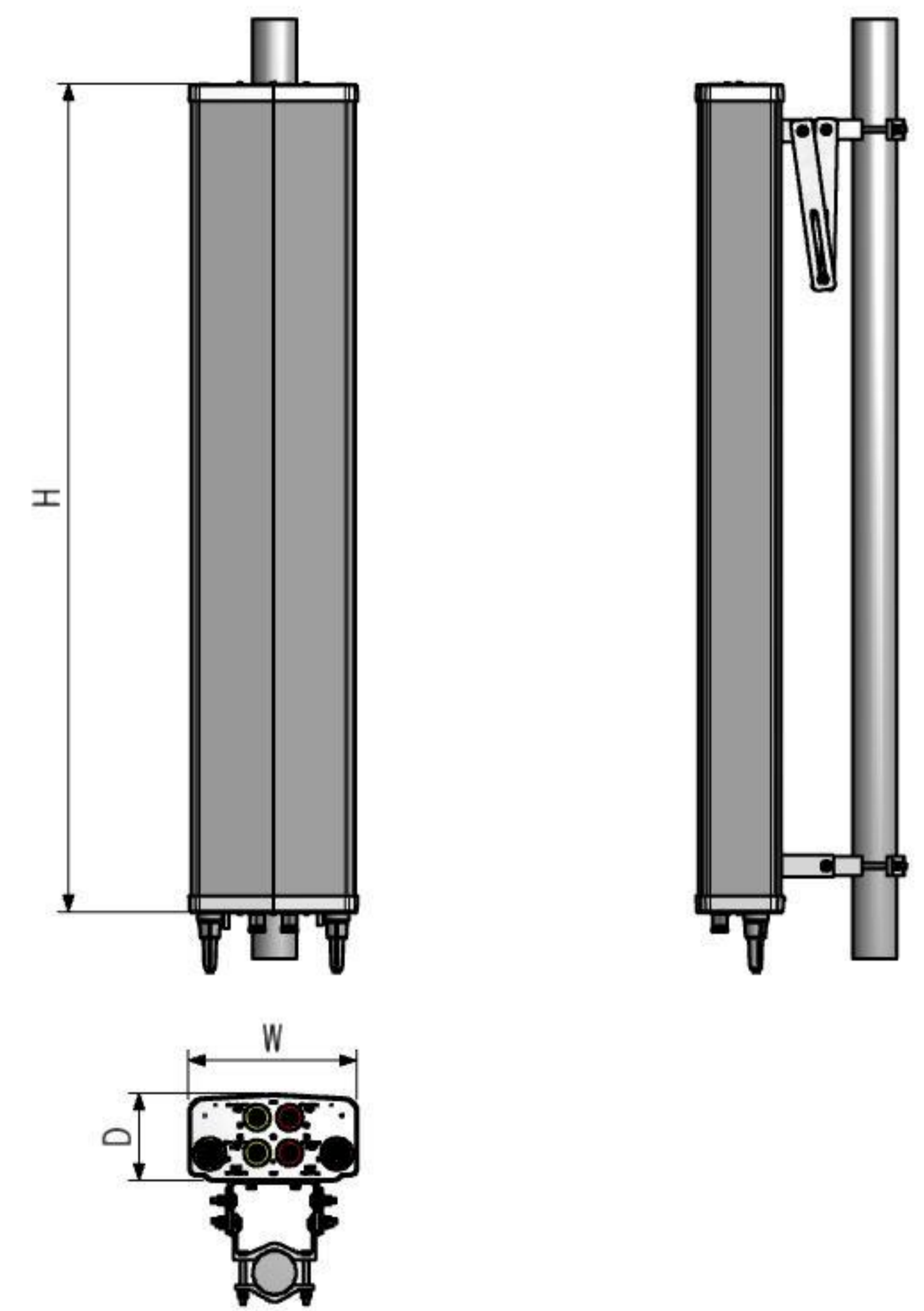
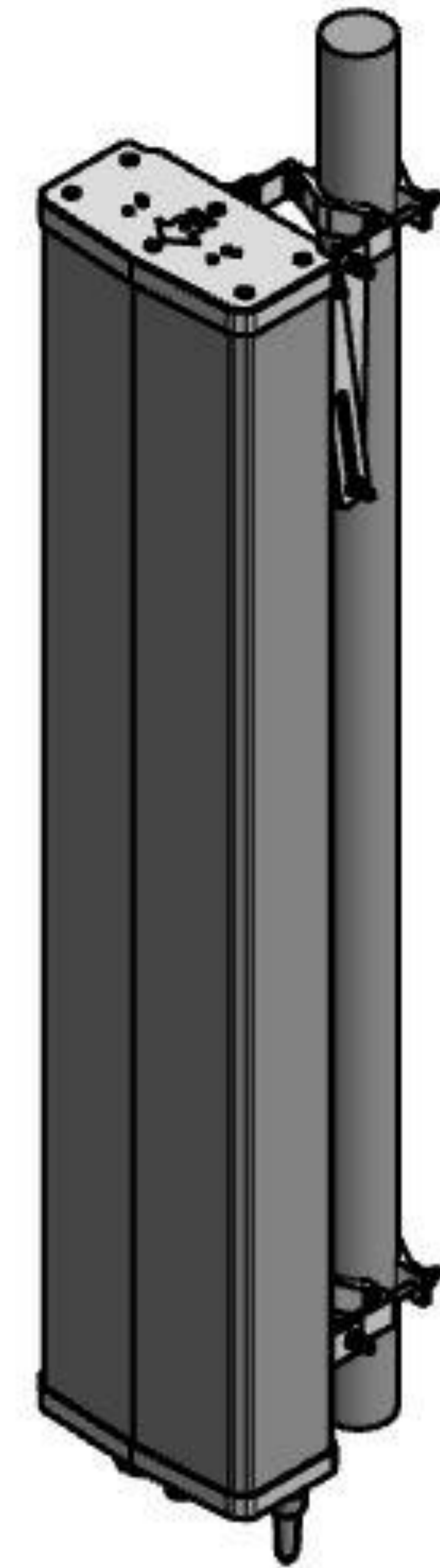


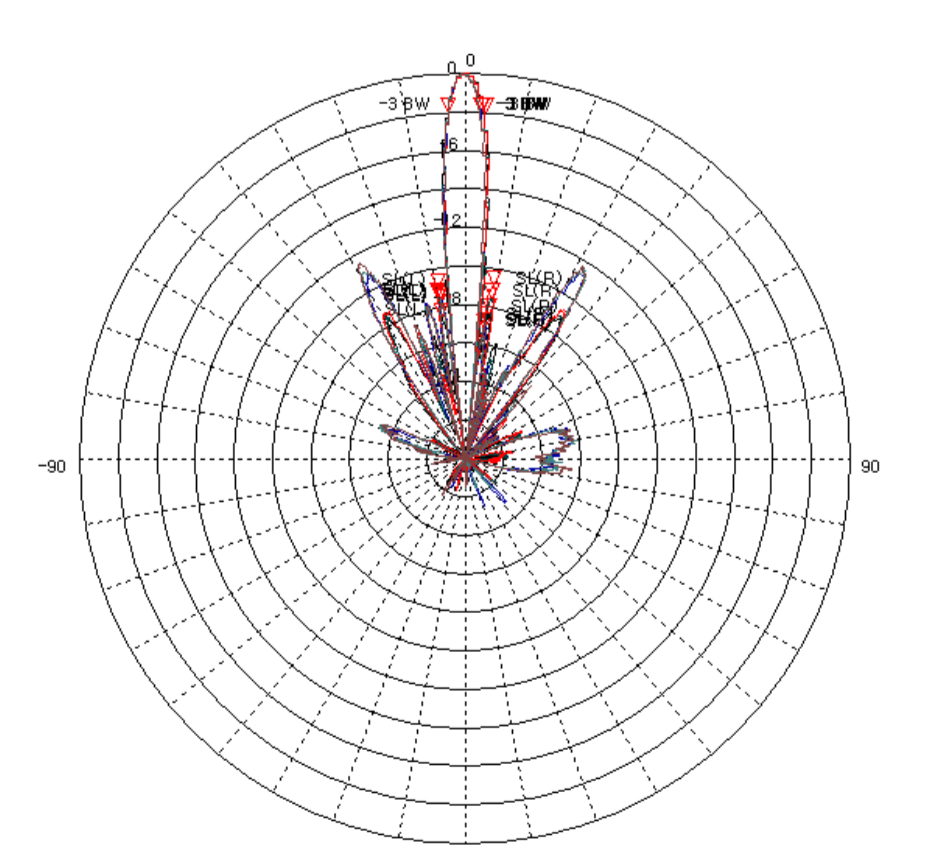
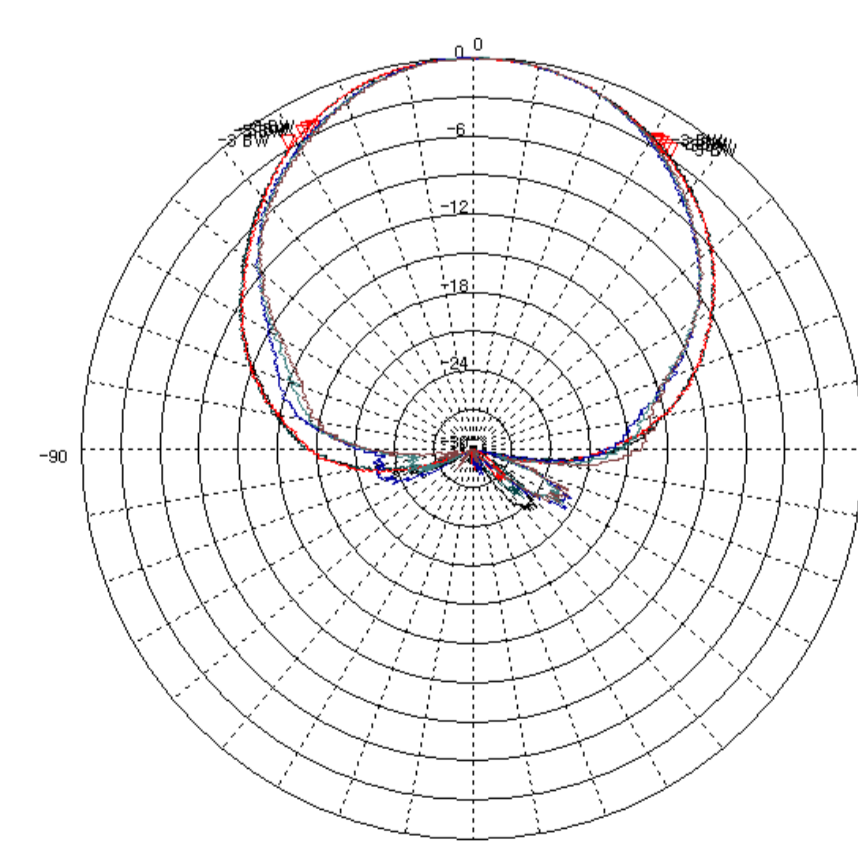
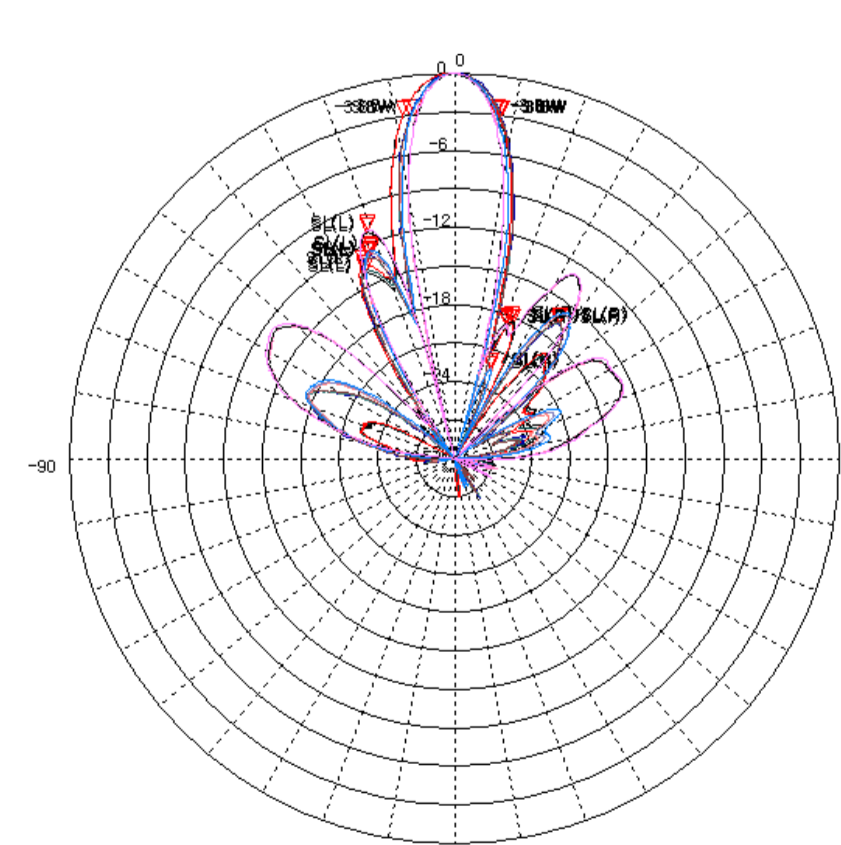
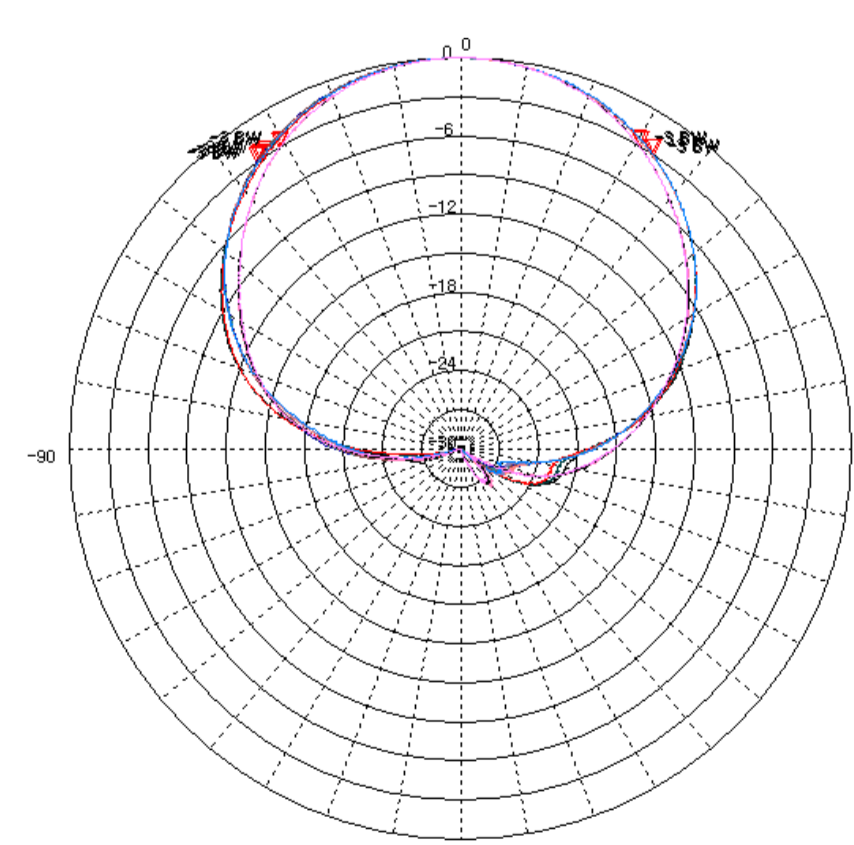
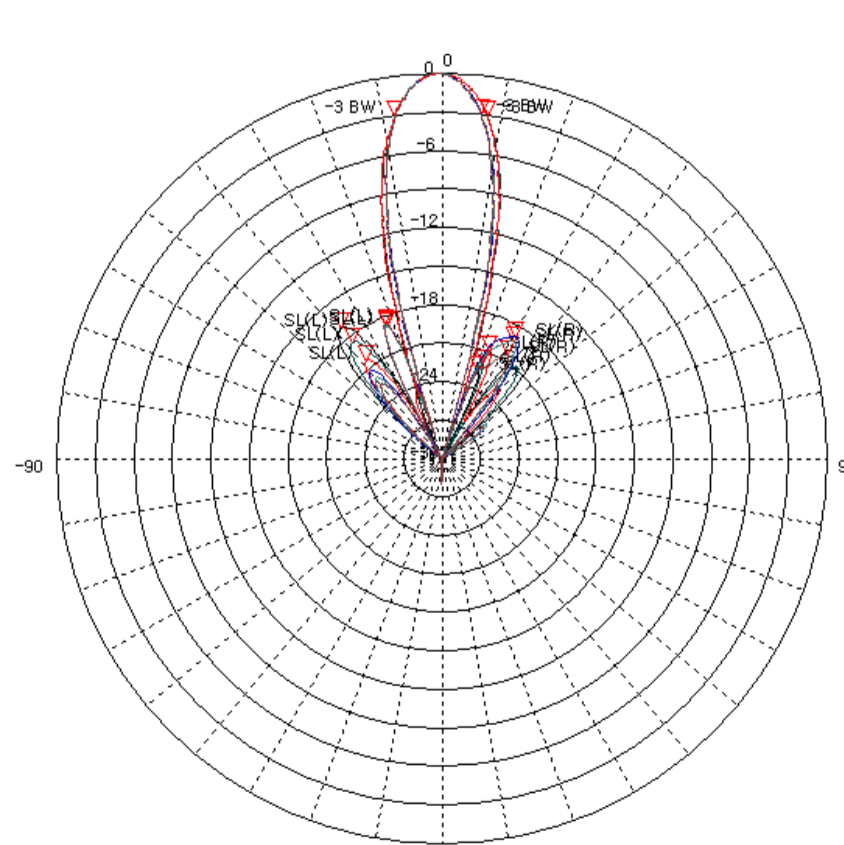
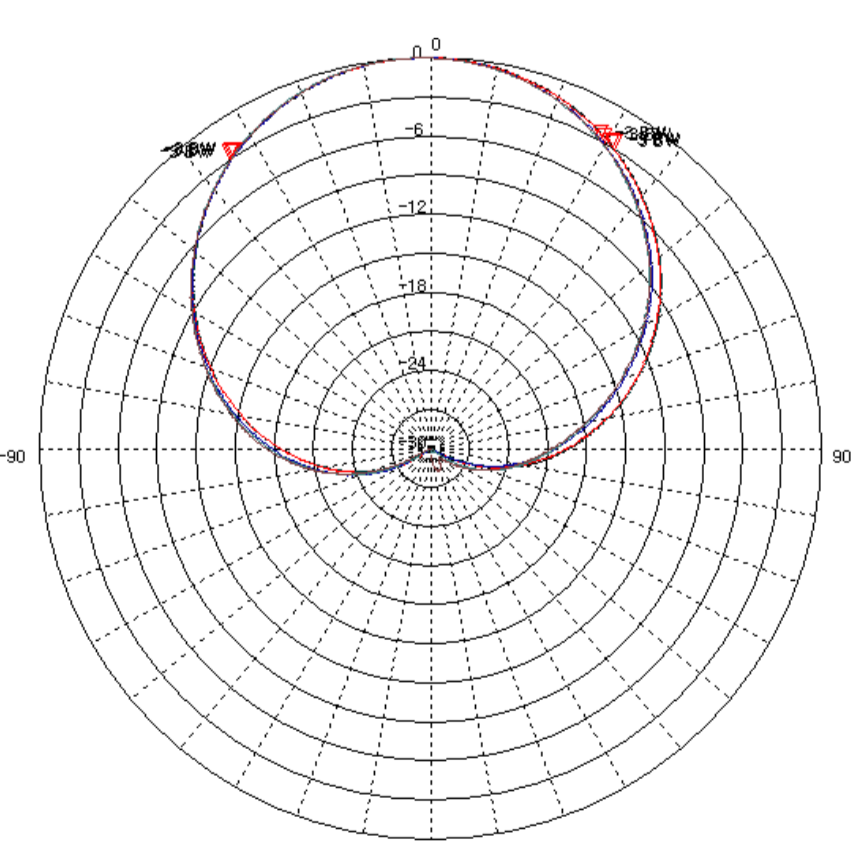
CGPI- IEQBDP-65-14

i. Electrical Specification				
Frequency Range	814~960 MHz	1735~1850MHz	1960~2200MHz	
Band Width	146 MHz	115MHz	240 MHz	
Gain	≥ 14 dBi	≥ 13.5 dBi	≥ 13.5 dBi	
Polarization	± 45° SLANT	± 45° SLANT	± 45° SLANT	
Beam width	Horizontal	65° ± 6°	63° ± 8°	61° ± 7°
	Vertical	13° ± 3°	13° ± 3°	13° ± 3°
F-B ratio	Horizontal (@180 ± 30°)	≥ 25 dB(0°) ≥ 24 dB(5°) ≥ 23 dB(10°)	≥ 23 dB	≥ 23 dB
	Vertical (@180 ± 60°)	≥ 25 dB(0°) ≥ 24 dB(5°) ≥ 23 dB(10°)	≥ 23 dB	≥ 23 dB
VSWR	≤ 1.5 : 1	≤ 1.5 : 1	≤ 1.5 : 1	
Impedance	50 Ω	50 Ω	50 Ω	
Electrical tilt	0° ~ 10°	0° ~ 10°	0° ~ 10°	
Isolation	≥ 27 dB	≥ 27 dB	≥ 27 dB	
IMD (3rd) @ 2x43dBm	≤ -150 dBc	≤ -150 dBc	≤ -150 dBc	
Cross-Polar Ratio	≥ 15 dB	≥ 15 dB	≥ 15 dB	
Tracking (±60°)	≤ 3 dB	≤ 3 dB	≤ 3 dB	
Squint	± 5°	± 5°	± 5°	
Maximum input power	≥ 350 W			



ii. Mechanical Specification	
Radom Dimension (W x D x H)	297 x 150 x 1470 mm
Weight (exclude bracket)	≤ 13 kg
Connector Type	7/16" DIN-Female x 6
Withstand Wind Pressure	60 m/sec
Radom Material (color)	A.S.A. +P C (Cool Gray 4C)
Mechanical Down Tilt	0° ~ 20°
Temperature	-30 °C ~ 60 °C
Packing Size (H x W x D)	-
Packing Weight	-

iii. Radiation Pattern



Horizontal Pattern
Low Band

Vertical Pattern
Low Band

Horizontal Pattern
High Band

Vertical Pattern
High Band

Horizontal Pattern
2.6G High Band

Vertical Pattern
2.6G High Band