

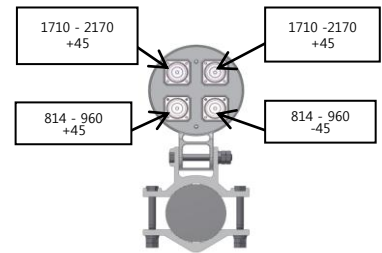
Cylinder Type sector Antenna

819 ~ 960, 1710 ~ 2170 MHz / 7dBi, 7dBi

CPI-CQBDP-077

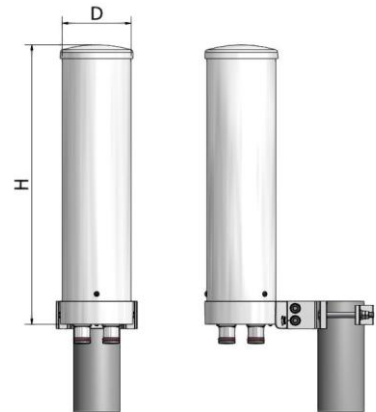
i. Electrical Specification

Frequency Range		814 ~ 960 MHz	1710 ~ 2170MHz
Band Width		146 MHz	460 MHz
Gain		≥ 7 dBi	≥ 7 dBi
Polarization		± 45°	± 45°
Beam width	Horizontal	100° ± 30°	75° ± 20°
	Vertical	50° ± 20°	50° ± 20°
F-B ratio	Horizontal (@180 ± 30°)	≥ 10 dB	≥ 15 dB
	Vertical (@180 ± 60°)	≥ 10 dB	≥ 15 dB
VSWR		≤ 1.8 : 1	≤ 1.5 : 1
Impedance		50 Ω	50 Ω
Electrical tilt		-	-
Isolation		≥ 20 dB	≥ 25 dB
IMD (3rd)		≤ -150 dBc @ 2x43dBm	≤ -150 dBc @ 2x43dBm
1st Upper Side lobe level		-	-
Cross-Polar Ratio		≥ 15 dB	≥ 15 dB
Maximum input power		≥ 200 W	

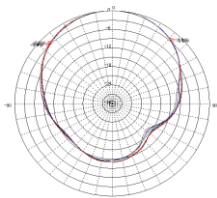


ii. Mechanical Specification

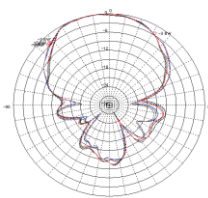
Radom Dimension (W x D x H)	∅ 120 X 520
Weight (exclude bracket)	1.93 Kg
Connector Type	7/16" DIN-Female x 4
Withstand Wind Pressure	60 m/sec
Radom Material (color)	A.S.A (Cool Gray 4C)
Mechanical Down Tilt	0° ~ 20°
Temperature	-30 °C ~ 60 °C
Packing Size (H x W x D)	-
Packing Weight	-



iii. Radiation Pattern

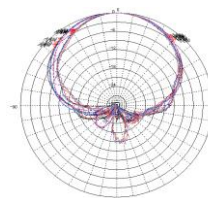


Horizontal Pattern

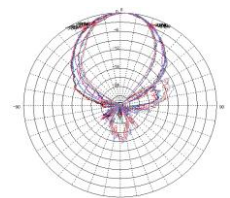


Vertical Pattern

Low Band



Horizontal Pattern



Vertical Pattern

High Band