

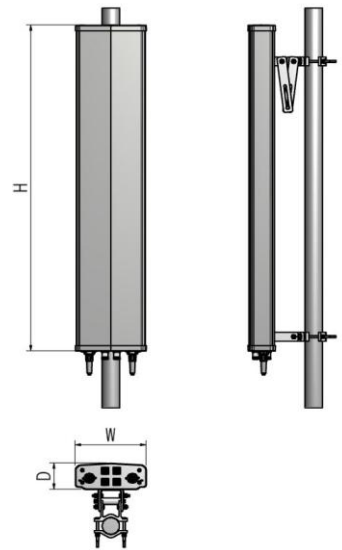
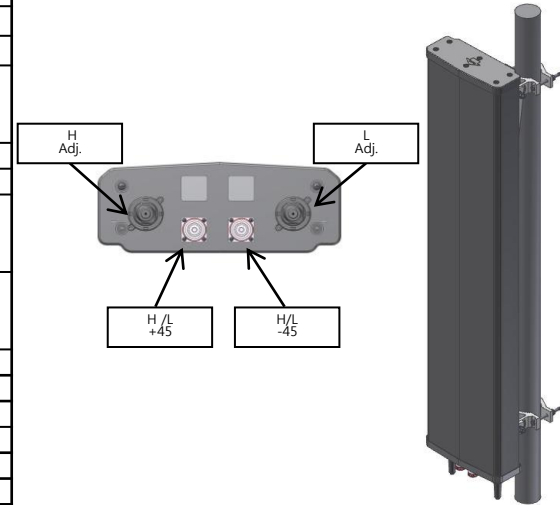
Triple Band Dual Polarization Horizontal 65° 14dBi(Dip.)

Adjust. Electrical Downtilt

ETBDP-14dBi(Dip.)

i. Electrical Specification

Frequency Range		839 ~ 894 MHz	1710 ~ 2170 MHz
Polarization		± 45°	
Band Width		55 MHz	460 MHz
Gain		≥ 14.0 dBi (0°)	≥ 13.5 dBi (0°)
		≥ 13.5 dBi (7°)	≥ 13.0 dBi (7°)
		≥ 13.0 dBi (14°)	≥ 12.5 dBi (14°)
Beam width	Horizontal	65° ± 5°	63° ± 9°
	Vertical	13° ± 3°	12° ± 3°
F-B ratio	Horizontal	≥ 25 dBi	≥ 25 dB (0°) ≥ 24 dB (7°) ≥ 23 dB (14°)
	Vertical	≥ 25 dBi	≥ 25 dB (0°) ≥ 24 dB (7°) ≥ 23 dB (14°)
Port Isolation		≥ 30 dB	≥ 27 dB
Band Isolation		≥ 25 dB	
VSWR		≤ 1 : 1.5	≤ 1 : 1.5
Impedance		50 Ω	
CPR(Cross-Polar Ratio)	0°	≥ 15 dB	≥ 15 dB
	±60°	≥ 10, 9, 8 dB	≥ 8, 7, 6 dB
Tracking (±60°)		≤ 2, 2, 2, 5 dB	≤ 3 dB
Squint		± 3.5°	± 5°
Tilt (error)		± 1°	± 1°
IMD (3rd)		≤ -150 dBc @ 2x43dBm	
Maximum input power		200 W	



ii. Mechanical Specification

Radom Dimension (W x D x H)	297 x 110 x 1468 mm
Weight (Exclude bracket)	≤ 10.4 Kg
Connector Type	7/16 " DIN-Female x 2 (+45°, -45°)
Withstand Wind Pressure	60 m/sec
Radome Material	ASA or PC/ASA
Radome Color	Cool Gray 4C
Mechanical Down Tilt	≥ 20 °
Temperature	-40 °C ~ 70 °C
Packing Size (H x W x D)	-
Packing Weight	-

iii. Radiation Pattern

