

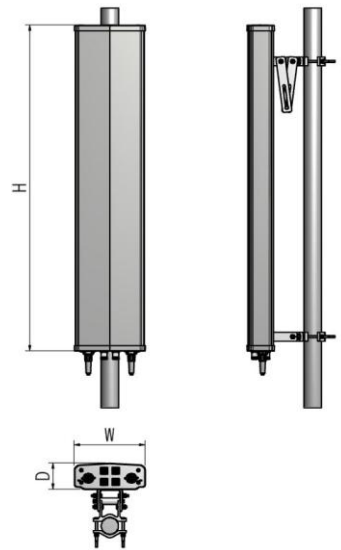
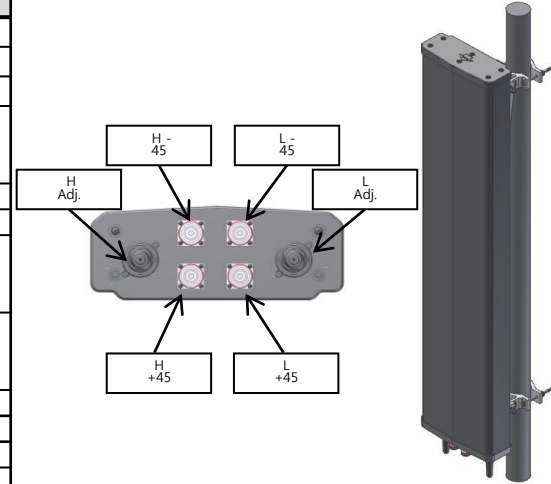
Triple Band Dual Polarization Horizontal 65° 14.5dBi

Adjust. Electrical Downtilt

ETBDP-14.5dBi

i. Electrical Specification.

Frequency Range	839 ~ 894 MHz	1710 ~ 2170 MHz	
Polarization	$\pm 45^\circ$		
Band Width	55 MHz	460 MHz	
Gain	≥ 14.5 dBi (0°)	≥ 14.0 dBi (0°)	
	≥ 14.0 dBi (7°)	≥ 13.5 dBi (7°)	
	≥ 13.5 dBi (14°)	≥ 13.0 dBi (14°)	
Beam width	Horizontal	$65^\circ \pm 5^\circ$	$63^\circ \pm 9^\circ$
	Vertical	$13^\circ \pm 3^\circ$	$12^\circ \pm 3^\circ$
F-B ratio	Horizontal	≥ 25 dB (0°)	≥ 25 dB (0°)
		≥ 24 dB (7°)	≥ 24 dB (7°)
	Vertical	≥ 23 dB (14°)	≥ 23 dB (14°)
		≥ 25 dB (0°)	≥ 24 dB (7°)
	≥ 24 dB (7°)	≥ 23 dB (14°)	
Port Isolation	≥ 30 dB	≥ 27 dB	
Band Isolation	≥ 25 dB		
VSWR	$\leq 1 : 1.5$	$\leq 1 : 1.5$	
Impedance	50Ω		
CPR(Cross-Polar Ratio)	0°	≥ 15 dB	≥ 15 dB
	$\pm 60^\circ$	$\geq 10, 9, 8$ dB	$\geq 8, 7, 6$ dB
Tracking ($\pm 60^\circ$)	$\leq 2, 2, 2, 5$ dB	≤ 3 dB	
Squint	$\pm 3.5^\circ$	$\pm 5^\circ$	
Tilt (error)	$\pm 1^\circ$	$\pm 1^\circ$	
IMD (3rd)	≤ -150 dBc @ 2×43 dBm		
Maximum input power	200 W		



ii. Mechanical Specification

Radom Dimension (W x D x H)	297 x 110 x 1475 mm	
Weight (Exclude bracket)	≤ 11.1 Kg	
Connector Type	7/16 " DIN-Female x 2	7/16 " DIN-Female x 2
Withstand Wind Pressure	60 m/sec	
Radome Material	ASA or PC/ASA	
Radome Color	Cool Gray 4C	
Mechanical Down Tilt	$\geq 20^\circ$	
Temperature	$-40^\circ \text{C} \sim 70^\circ \text{C}$	
Packing Size (H x W x D)	-	
Packing Weight	-	

iii. Radiation Pattern

