


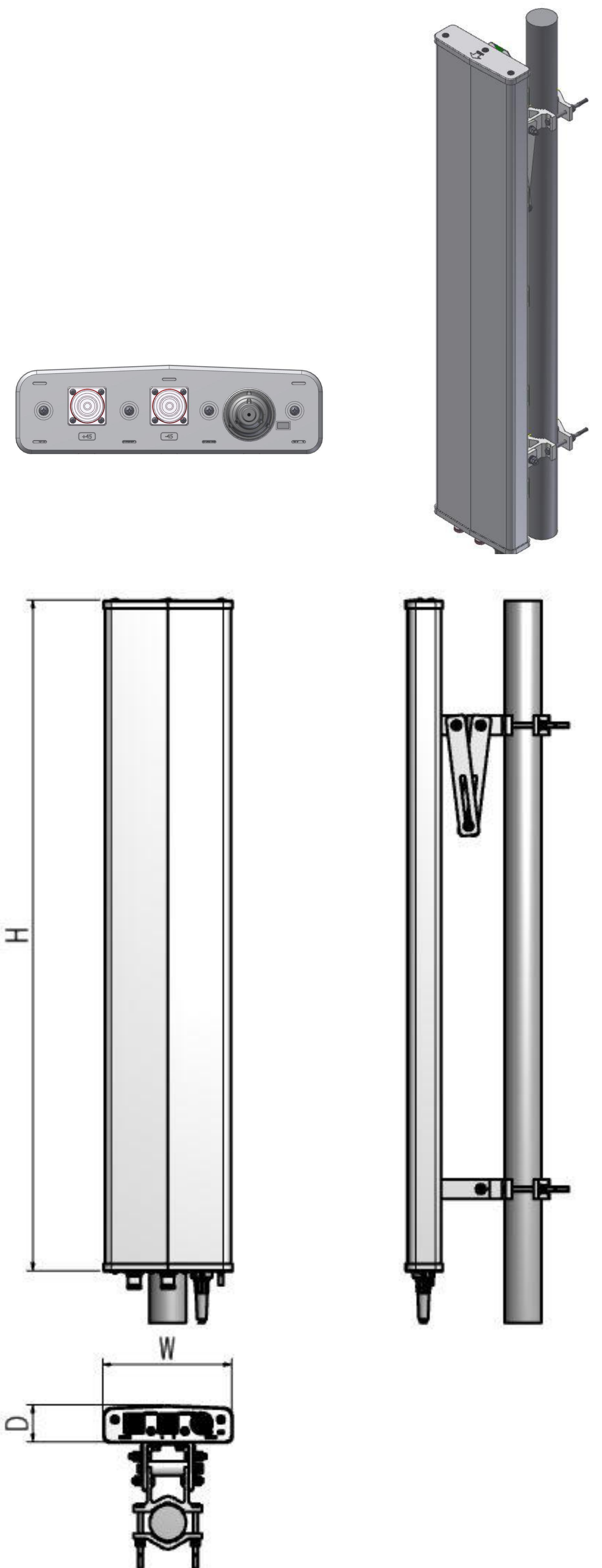
Single Band Dual Polarization Horizontal 65° 18dBi

Adjust. Electrical Downtilt

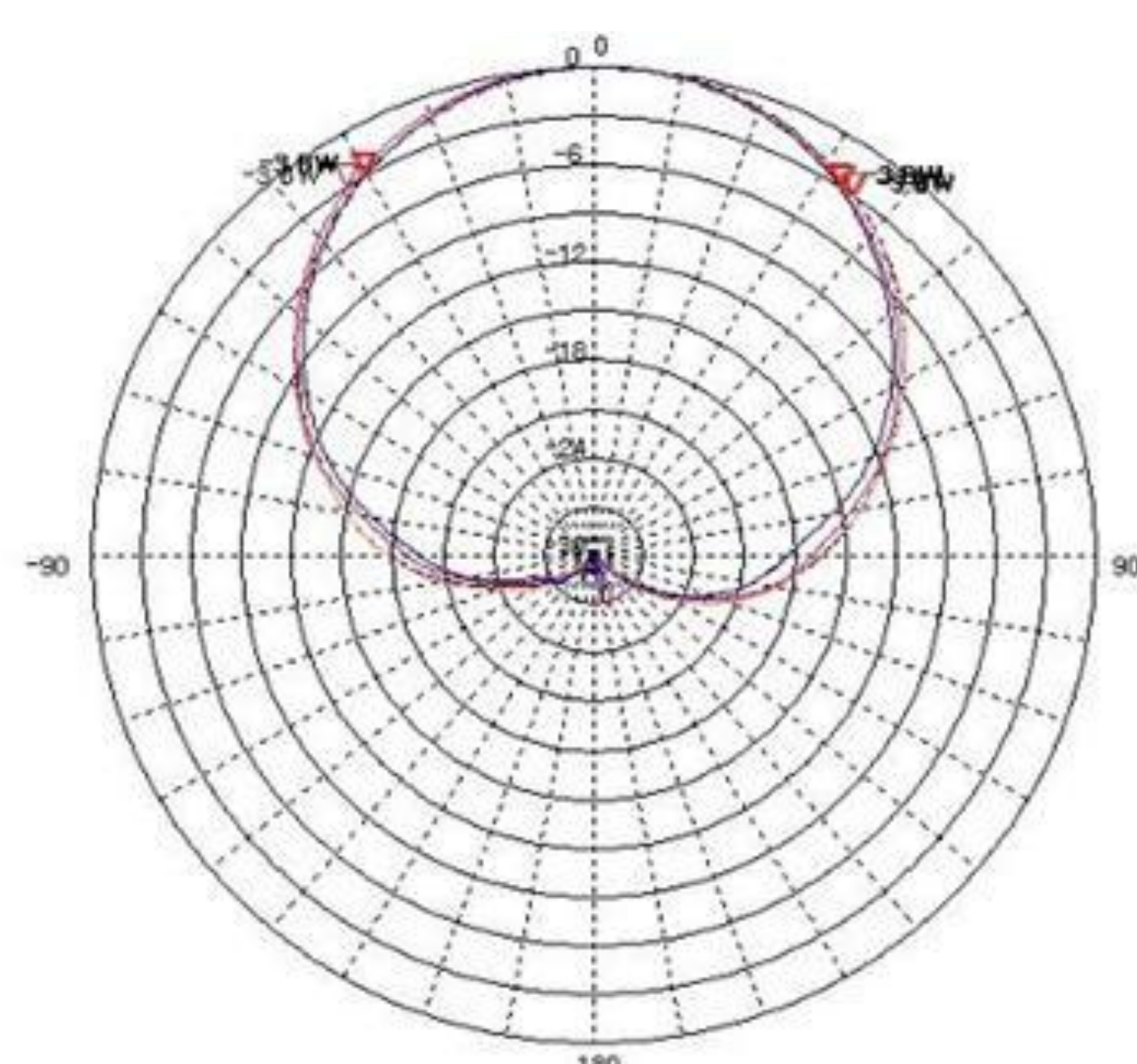
GSM-ESBDP-18

i. Electrical Specification		
Frequency Range		880 ~ 960 MHz
Band Width		80 MHz
Gain		18 dBi
Polarization		± 45° SLANT
Beam width	Horizontal	65°
	Vertical	7°
F-B ratio	Horizontal (@180 ± 30°)	≥ 25 dB
	Vertical (@180 ± 30°)	≥ 25 dB
VSWR		≤ 1.5 : 1
Impedance		50 Ω
Electrical tilt		0° ~ 10°
Isolation		≥ 30 dB
IMD (3rd)		≤ -150 dBc @ 2x43dBm
1st Upper Side lobe level		≥ 16 dB
Cross-Polar Ratio	0°	≥ 18 dB
	60°	≥ 10 dB
Squint		≤ 3
Maximum input power		≥ 350 W

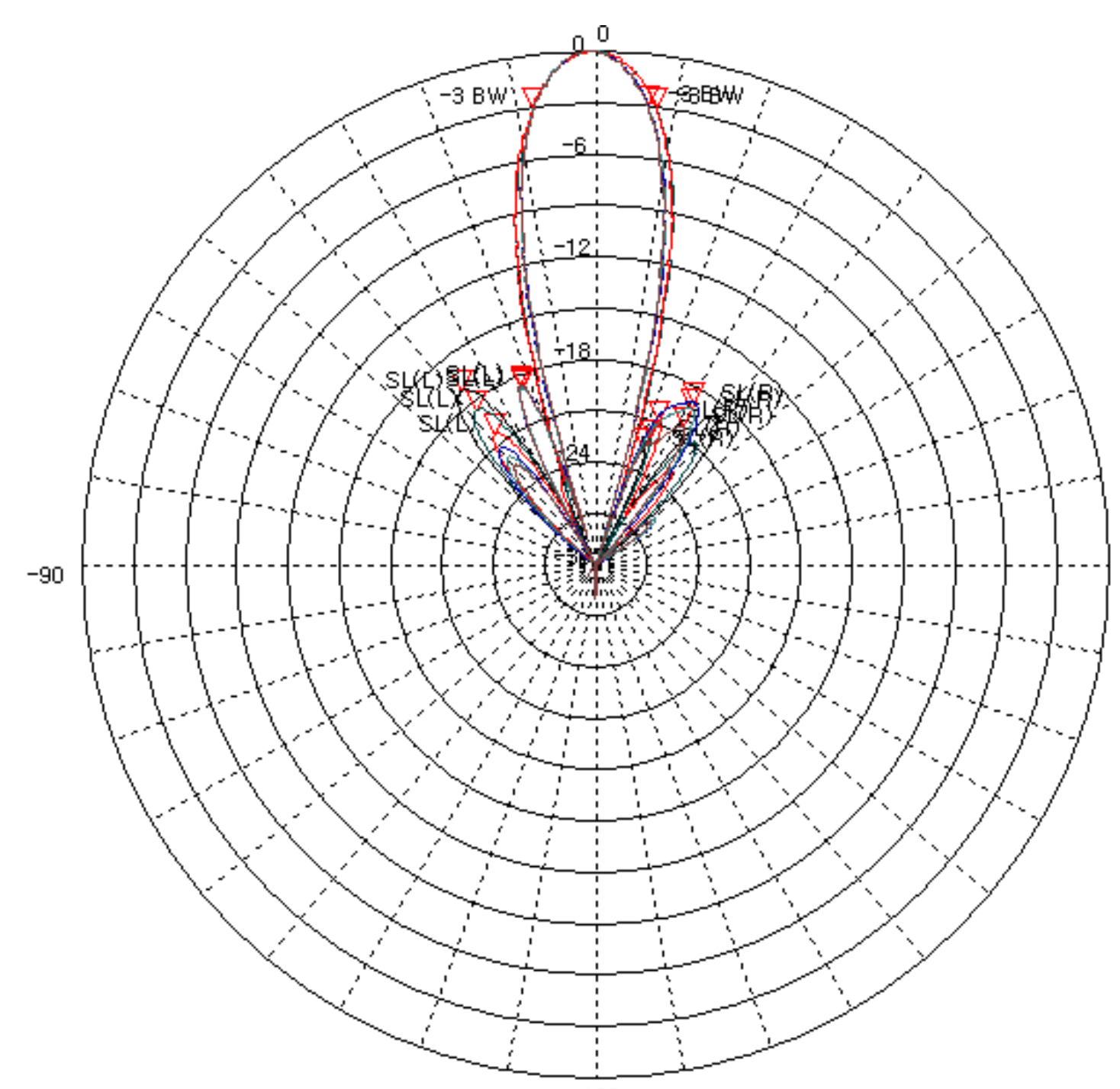
ii. Mechanical Specification		
Radom Dimension (W x D x H)		300 x 150 x 3000 mm
Weight (exclude bracket)		≤ 20 kg
Connector Type		7/16" DIN-Female x 2
Withstand Wind Pressure		60 m/sec
Wind load (at 180 km/h)	Fornt – Rear / N (lbf)	1626 (365.5lbf)
	Side / N (lbf)	813 (187.7lbf)
	Top – Bottom /N (lbf)	228 (51.2lbf)
Max Wind Load Area , m ²		0.9
Radom Material (color)		A.S.A. (Cool Gray 4C) 
Mechanical Down Tilt		0° ~ 20°
Temperature		-40 °C ~ 70 °C
Packing Size (H x W x D)		-
Packing Weight		-



iii. Radiation Pattern



Horizontal Pattern



Vertical Pattern