

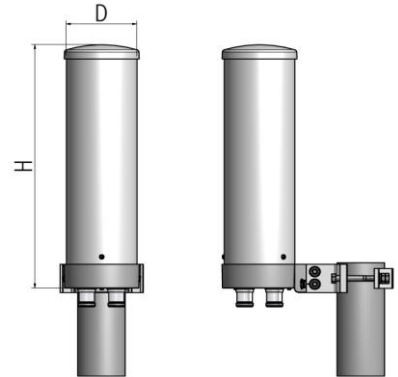
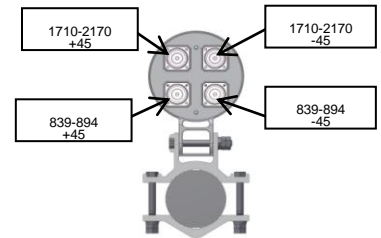
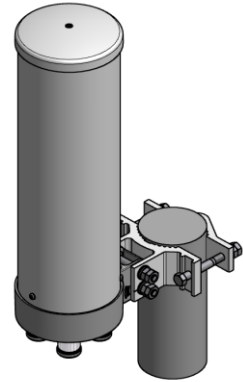
Triple Band Cylinder Type Sector Antenna

839 ~ 894, 1710 ~ 2170 MHz / 5 dBi, 7 dBi

TBDP-5dBi (CPI-UHR-057)

i. Electrical Specification

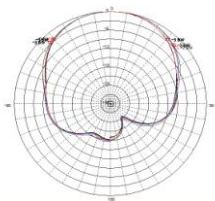
Frequency Range	839 ~ 894 MHz	1710 ~ 2170 MHz
Polarization	± 45°	
Band Width	55 MHz	460 MHz
Gain	≥ 5 dBi	≥ 7 dBi
Beam width	Horizontal	100° ± 30°
	Vertical	70° ± 30°
F-B ratio	Horizontal	≥ 10 dBi
	Vertical	≥ 10 dBi
Port Isolation	≥ 20 dB	≥ 25 dB
Band Isolation	≥ 25 dB	
VSWR	≤ 1 : 1.8	≤ 1 : 1.5
Impedance	50 Ω	
CPR(Cross-Polar Ratio)	0°	≥ 15 dB
	±60°	≥ 6 dB
Tracking (±60°)	≤ 3 dB	≤ 3 dB
Squint	± 5°	± 3.5°
Tilt (error)	-	-
IMD (3rd)	≤ -140 dBc @ 2x43dBm	
Maximum input power	200 W	



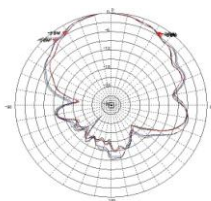
ii. Mechanical Specification

Radom Dimension (D x H)	Ø 120 x 450 mm	
Weight (Include bracket)	≤ 2 Kg	
Connector Type	7/16 " DIN-Female x 2	7/16 " DIN-Female x 2
Withstand Wind Pressure	60 m/sec	
Radome Material	ASA	
Radome Color	Cool Gray 4C	
Mechanical Down Tilt	± 20 °	
Temperature	-40 °C ~ 70 °C	
Packing Size (H x W x D)	-	
Packing Weight	-	

iii. Radiation Pattern

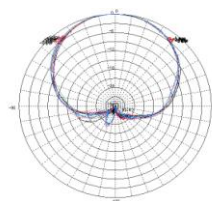


Horizontal Pattern

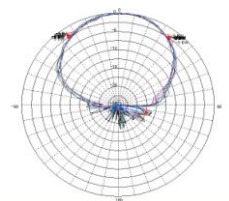


Vertical Pattern

Low Band



Horizontal Pattern



Vertical Pattern

High Band